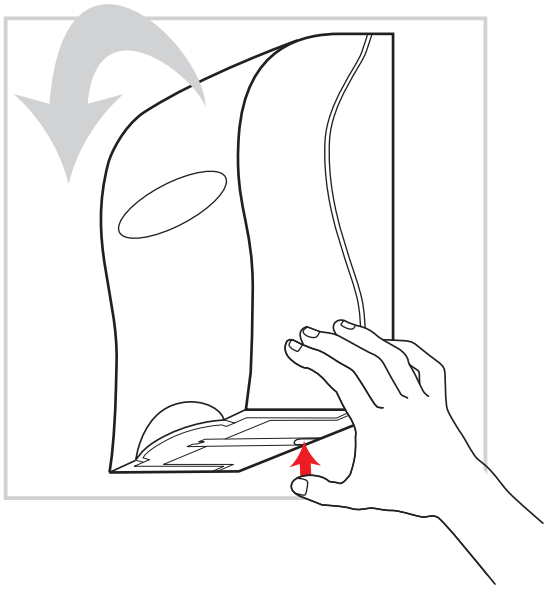
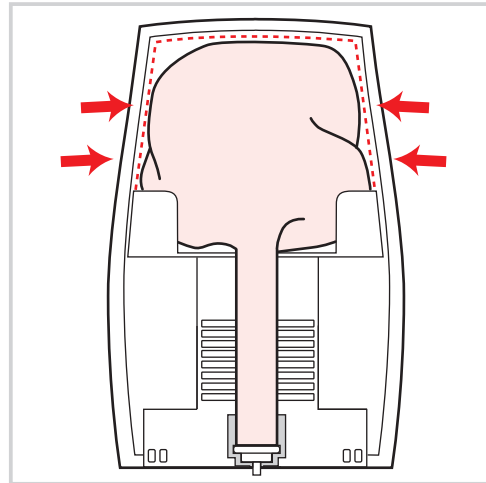


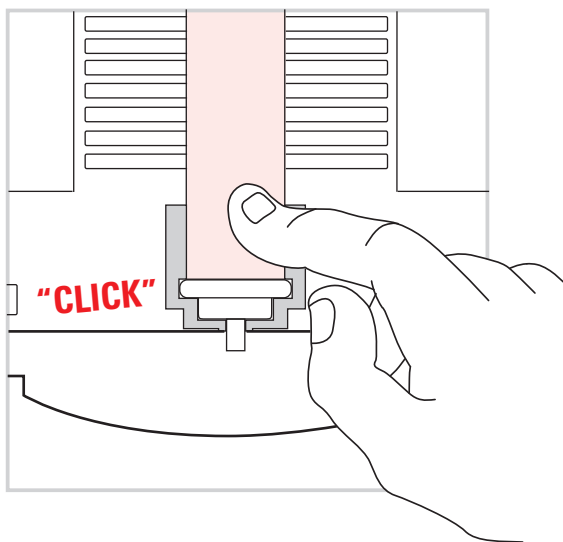
Loading Instructions - Liquid Soap Dispenser



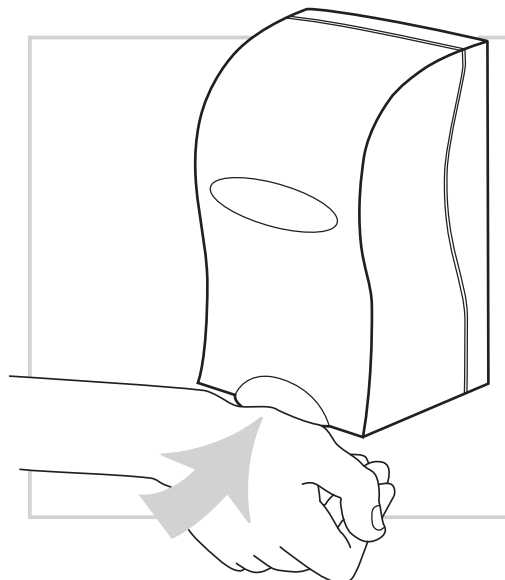
1. To open - press release button at the rear underside of dispenser. If necessary, ease cover forward.



2. Remove soap bag from carton and place entire bag on top level.
3. Make sure the bag does not obstruct the cover from closing.



4. "Click" tube tip into the nose piece of dispenser.



5. Close cover firmly and push lever several times to prime the pump.